



2016-2018 Focus RS Front Splash Guard

Installation Instructions

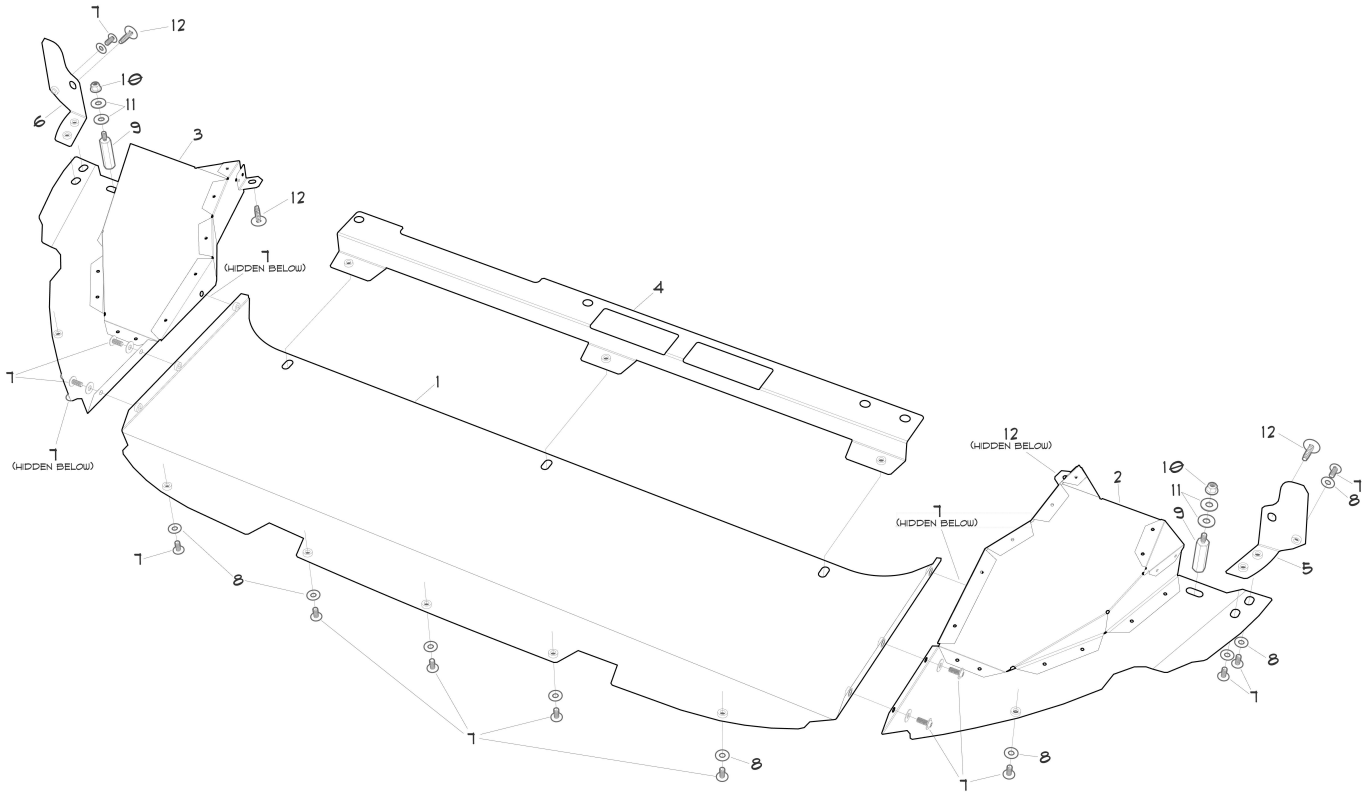


FIGURE 1 - FRONT SPLASH GUARD PARTS DIAGRAM

Part	Description	Quantity
1	Front Splash Guard (center)	1
2	Driver's Side Brake Duct Assembly	1
3	Passenger Side Brake Duct Assembly	1
4	Mounting Bracket	1
5	Driver's Wheel Well Connection Bracket	1
6	Passenger Wheel Well Connection Bracket	1
7	M6 x 14 mm Torx-Drive Screw	26 (includes 2 extra)
8	M6 Washer (6.4mm I.D., 18mm O.D.)	26 (includes 2 extra)
9	M6 x 45mm M/F Standoff	2
10	M6 Nylon Lock Nut	2
11	Fender Washer (5/16 I.D., 3/4" O.D.)	3
12	OEM SCREW (reuse 4 screws from OE splash guard)	4 used

TOOLS NEEDED

Required Tools	Suggested Tools
T30 Torx driver	Small impact driver/screw driver
Small flathead screwdriver	T30 socket or T30 drive bit
Phillips screwdriver	7/16" Socket
13 mm wrench	Panel puller
10mm wrench	
5/8" wrench	
7/16" wrench	

INSTALLATION PROCEDURE

Please read entire installation procedure before you begin.

****Always wear safety glasses and appropriate protective equipment when performing these tasks****

1. **Pre-assemble your ADF Customs Front Splash Guard.** Refer to the diagram in **Figure 1**.
 - a. Using three of the black M6 torx screws w/washers, secure the drivers side brake duct assembly (*part #2*) to the center portion of the splash guard (*part #1*). Repeat this step for passenger side brake duct assembly (*part #3*). Tighten all screws securely.
 - b. Using four more torx screws w/washers, attach both driver and passenger wheel well connection brackets (*part # 5 & 6*) to the splash guard assembly. **Leave these screws slightly loose to adjust position later.**

2. **Secure your vehicle** on a lift, ramps or jack stands.

3. **Remove your ADF Customs Skid Plate** or OEM engine splash guard.
 - a. Use a 7/16" socket or wrench, remove your ADF Customs skid plate. Alternatively, use a T30 torx driver to remove your OEM engine splash guard.
 - b. If you have previously installed an ADF Customs skid plate, remove the three 1" skid plate standoffs from the rivet nuts in the radiator support. These three standoffs are what hold the new splash guard mounting bracket (*part #4*).

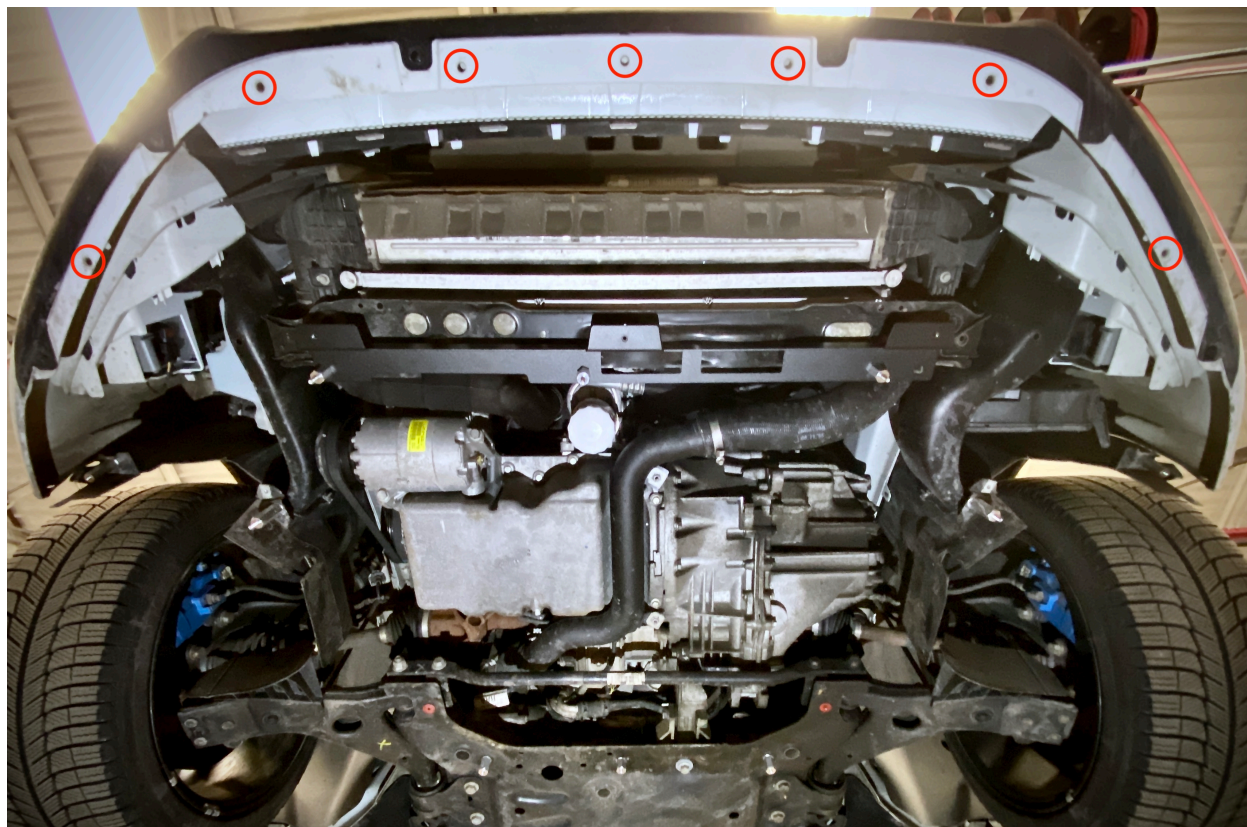


FIG. 2 - FASTENER LOCATIONS; MOUNTING BRACKET

4. Remove the OEM front splash guard.

- a. Remove seven plastic rivets from the front bumper cover. See **Figure 2** for locations circled in red *(The plastic rivets holding the gray/black trim do not need to be removed).*
- b. Remove seven T30 screws along the rear of the splash guard *(3 located in the radiator support, and 2 in each fender liner).*
- c. Remove one T30 screw and one plastic rivet inside each wheel well *(2 screws, 2 plastic rivets in total).*
- d. The OEM splashguard can now be removed.

5. Install mounting bracket.

- a. Using a small flathead screwdriver, **remove all of the red OEM fasteners** from the radiator support. ****PLEASE NOTE: If you are not planning to use an ADF Customs Skid Plate, simply install the mounting bracket on the radiator support with the OEM Fasteners.****
- b. If you have previously installed an ADF Customs skid plate, proceed to next step. If you have not yet installed your ADF skid plate, install three rivet nuts into the radiator support now. Refer to **Figure 3** for rivet nut locations.
- c. Fix the mounting bracket in place with the same three 1" standoffs removed earlier (*the three front skid plate standoffs*). The installed mounting bracket is pictured in **Figure 2**.

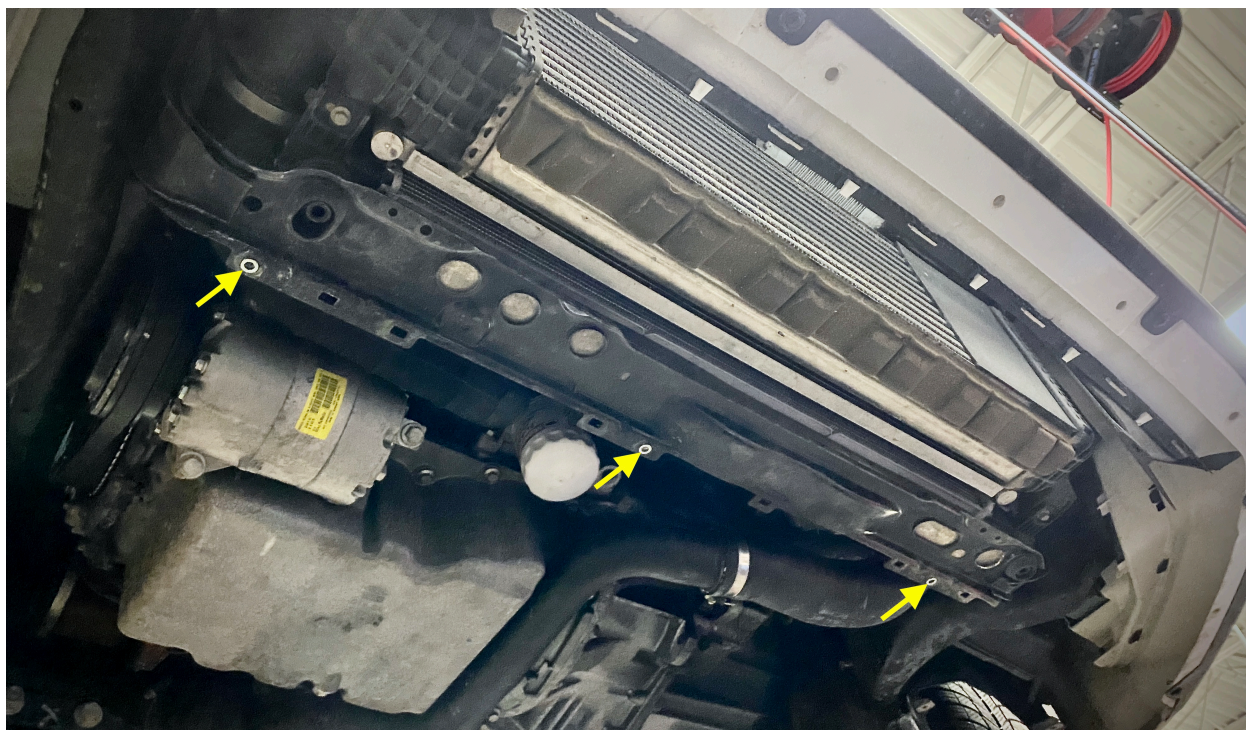


FIG. 3 - RADIATOR SUPPORT WITH RIVET NUTS INSTALLED



FIG. 4 - RED ARROW= OEM SCREW; YELLOW ARROW= STANDOFF LOCATION

6. **Install the two splash guard standoffs** (part #9). Refer to the **yellow** arrow in **Figure 4**. The standoff locations/orientation are indicated by the yellow arrow.
 - a. Remove the two clip nuts (*one each side*).
 - b. Use the 3/4" o.d. fender washers (part #11) and locknuts (part #10) to install one standoff in each fender liner.

7. **Install the ADF Customs Front Splash Guard.** **To ease installation, leave all of these fasteners slightly loose until the end!**
 - a. With the mounting bracket and standoffs secured in place, fit the new splash guard into position.
 - b. Starting in the center and working your way out to the sides, thread seven M6 torx screws w/ washers through the bumper cover into the new splash guard (*through the holes where the plastic rivets were previously*).
 - c. Install five additional M6 torx screws w/washers through the splash guard, three into the mounting bracket and one into each standoff.

- d. Install two OEM torx screws through the new splash guard into their original positions near the inner edge of each brake duct. See the **red arrow Figure 4** for location.
 - e. Next, use one OEM torx screw and one m6 torx screws w/washer to secure each wheel well connection bracket to the fender and fender liner inside the wheel wells.
 - f. Once all fasteners are in place and positioned correctly, **tighten all fasteners securely.**
8. With the front splash guard now complete, **install your ADF Customs Skid Plate** or OEM engine splash guard.
9. **Double check all fasteners** are secure and all tools are accounted for.
10. **Enjoy your new Front Splash Guard** and the added protection!!

Thank you for choosing ADF Customs! We appreciate your business. Should you have any questions, issues or feedback, please email us at: ***info@adfcustoms.com***

If you are happy with your ADF Customs product and customer experience, please leave a review or share online via your favorite forum, Facebook or Instagram.