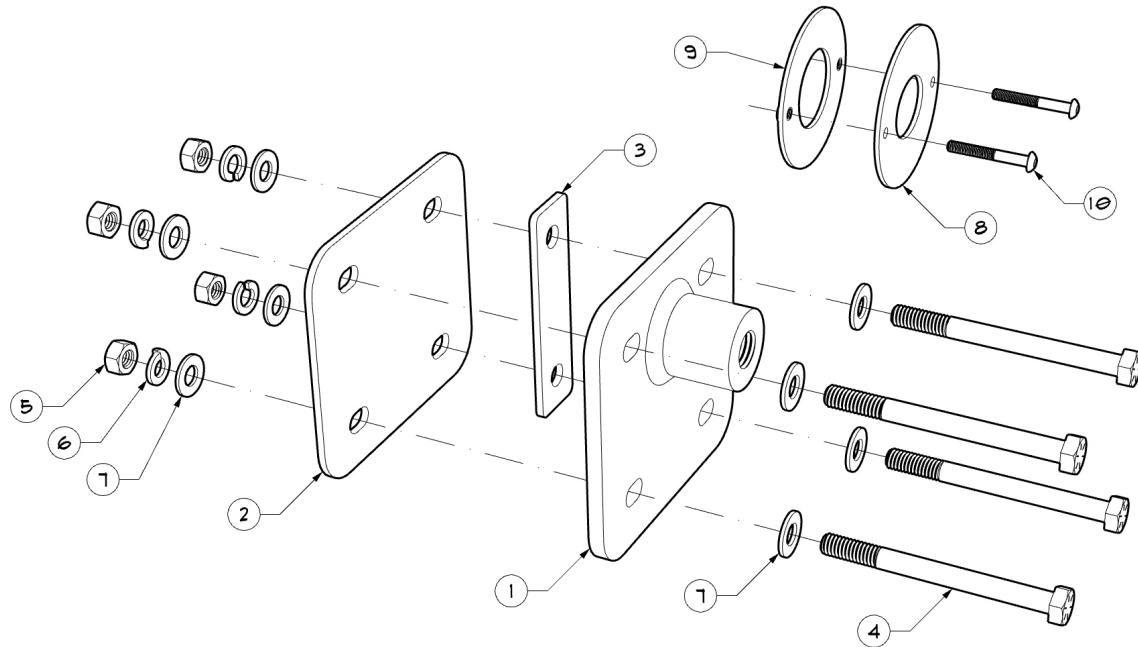




## 2012-2018 Focus Tow Hook Receiver Kit Installation Instructions



**FIGURE 1 - TOW HOOK RECEIVER KIT PARTS DIAGRAM**

Part	Description	Quantity
1	Receiver	1
2	Back Plate	1
3	Shim Plate	1
4	5/16-18 Grade 8 Bolt	4
5	5/16-18 Grade 8 Nut	4
6	5/16 Lock Washer	4
7	5/16 Flat Washer	8
8	Front Bezel	1
9	Back Bezel	1
10	10-32 Hex-Drive Screw	2

## TOOLS NEEDED

Required Tools	Suggested Tools
Ratchet wrench with 1/2" socket	Angle die grinder with carbide burr bit
1/2" wrench	High quality drill bit set
1/8" allen wrench or hex socket/driver	
T25 and T30 Torx sockets/drivers	
High quality 3/8" drill bit/s	
1/4" drill bit/s	
Torque wrench	
1-1/2" hole saw, or similar, to cut a hole in grille	

## INSTALLATION PROCEDURE

*\*Please read entire installation procedure before you begin.\**

*\*\*Always wear safety glasses and appropriate protective equipment when performing these tasks\*\**

**1. Disconnect negative battery terminal**, set parking brake, secure vehicle on jack stands, etc. Please take all applicable safety precautions for your install conditions.

**2. Remove front bumper cover** using T25 & T30 Torx sockets and flathead screwdriver.

**3. Position receiver on the front of the crash bar.** Please keep in mind, the four holes will be drilled through the front *and* back walls of the crash bar. When you decide where you want to mount the front plate, **mark the four holes with a marker**, as in figure 2.

*Note:* The receiver plate is designed to be mounted on the passenger side of the crash bar, with the threads at the bottom for the 2013-14 Focus, and the threads at the top for 2015-18 models (see figures 3 & 4).



FIGURE 2 - MARK HOLES FOR DRILLING

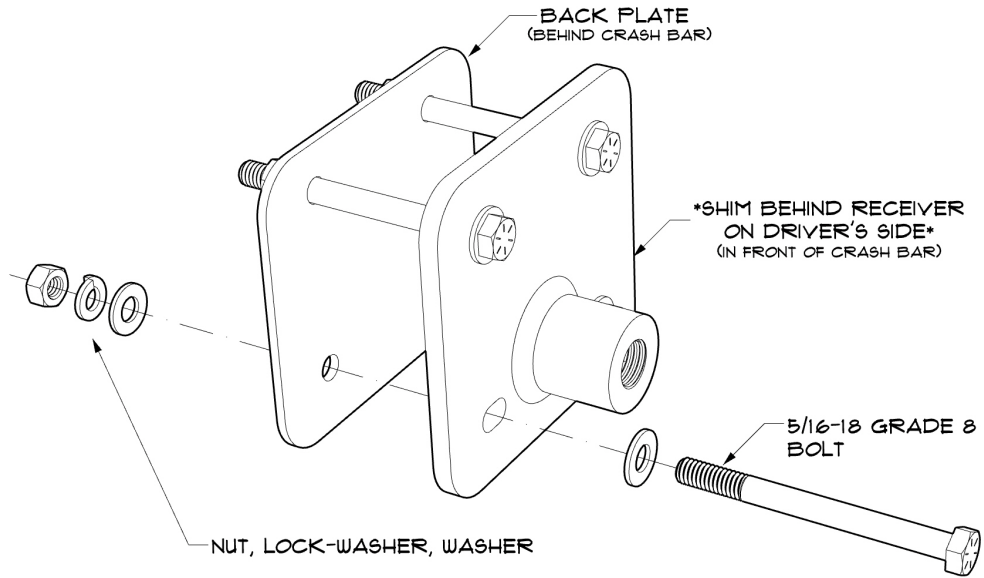


FIGURE 3 - 2013-2014 FOCUS RECEIVER ORIENTATION

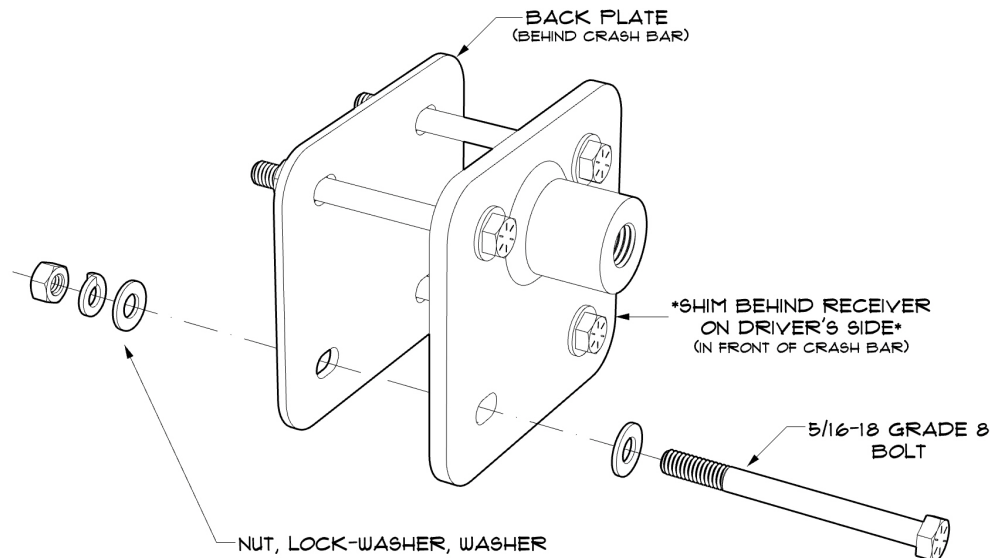


FIGURE 4 - 2015-2018 FOCUS RECEIVER ORIENTATION

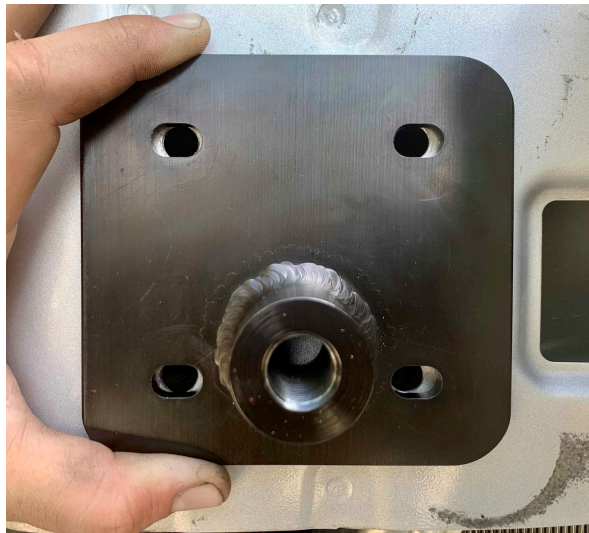
**4. a. Drill the four marked holes.** In this step, we suggest using a very high-quality drill bit as the steel in the crash bar is extremely tough. It is also suggested to start with a smaller sized bit and work up to the 3/8" bit. This will make it easier to drill the holes.

**b.** Using the front holes as a guide, **drill four holes in the rear wall of the crash bar.** Take care to ensure the bit is as straight as possible when drilling.



**FIGURE 5 - DRILL CRASH BAR**

**5. Test fitment** by placing the front plate on the front of the crash bar and sliding all four bolts through. Place the rear plate over the bolts on the back side, sandwiching the crash bar. See Figure 8. If bolts have a hard time sliding all the way through or lining up with the holes on the rear plate, **adjust/enlarge the holes as necessary.** This can be done with a slightly larger drill bit, a file, or an angle die grinder with a burr bit. The burr bit was found to be the quickest, but care must be taken to avoid any surrounding objects.



**FIGURE 6 - CHECK FITMENT**

**6.** After the plates are properly fitted, **secure the receiver, shim and back plate** using the four 5/16 bolts. Be sure to use all washers and lock washers in the positions described in figure 1.

**7. Tighten all bolts** evenly using a 1/2" wrench and socket. While holding the rear nuts with the wrench, torque the bolts **to 25 ft-lbs.** The back plate will conform to the shape of the crash bar.



FIGURE 7 - INSTALL RECEIVER



FIGURE 8 - RECEIVER INSTALLATION, TOP VIEW

---

**8. a. Locate and cut the hole in the grille.** Due to variations in mounting, cutting the hole in the grille will require creativity and a little bit of luck when determining placement. We have suggested a 1-1/2" hole saw for cutting the hole, but it is possible to cut a smaller hole depending on your desired results (for example, some customers prefer a smaller hole to avoid using the trim bezel).

- For 2013-14 models- The bumper cover/grille assembly may need to be held in place temporarily to find the correct hole location.

- For 2015-18 models- The grille pops out of the bumper cover, so bumper cover can now be reinstalled. Removing the grille from the bumper cover should make locating and drilling the hole much easier.

**b.** After determining where the hole must go, **drill a small pilot hole** in the grille to verify your placement. **Then proceed to cut/drill a for the tow hook or tug accessory shaft.** If the hole ends up a little large. The provided bezel will assist in hiding any excessive or rough cutting.

**10. Install the bezel on the grille.** The side with the small hole goes on the front of the grille. The side with threaded inserts and large center hole goes on back. The screw holes are designed to be in the horizontal position. See figure 9 for finished example.

**a.** Locate and drill two 1/4" holes for the bezel screws. Smaller pilot holes may be helpful.

**b.** Thread the two hex-drive screws through the front bezel, threading them into the back bezel. Leave loose until final placement is achieved.



**FIGURE 9 - INSTALLED BEZEL**

**11. Reinstall the bumper cover and/or grille** (if not already completed on an earlier step).

**12.** Double check that the OEM-style tow hook or tug accessory shaft threads through the bezel into the tow hook receiver. **Adjust the bezel as needed and tighten.**

**13. Reconnect negative battery cable.** You are now ready to use your OEM-style tow hook or your awesome Raceseng Tug Accessories... **Enjoy!!**

*\*\*Please refer to the Raceseng installation manuals for your Raceseng accessories.\*\**

---

Thank you for choosing ADF Customs! We appreciate your business. Should you have any questions, issues or feedback, please email us at: [info@adfcustoms.com](mailto:info@adfcustoms.com)

If you are happy with your ADF Customs product and customer experience, please leave a review or share online via your favorite forum, Facebook or Instagram.